

Vulcan

Materials Company

Comal Quarry



COMMITTED TO BEING A GOOD NEIGHBOR IN COMAL COUNTY

We are committed to investing in the future of Comal County and operating in a safe, responsible manner. Our construction aggregates help grow and sustain communities, forming our roads, bridges, residential and commercial buildings, schools, hospitals and places of worship.

Located in one of the fastest growing large counties in the nation, the Comal Quarry is strategically positioned along Highway 46 to responsibly support the local economy and meet the growing community needs, including infrastructure and transportation safety improvements.

Set on 1,500 acres, the project is uniquely designed to fit within the existing landscape and topography, including 600+ acres of buffer, setbacks and non-mining areas. We expect to mine only about 50 acres in the first 10 years, and it will take up to 80 years to reach completion.

We will protect and conserve water resources. Rock will be extracted from the upper surface above the aquifer water table; water will be recycled; and Trinity Aquifer water usage will be far less than a residential subdivision use. We are committed to working with our neighbors, answering questions and being a responsible member of the community.

COMMITTED TO COMAL COUNTY

Located in one of the fastest growing large counties in the nation, the Comal Quarry is strategically positioned along Highway 46 to responsibly support the local economy and meet the growing community needs.

OVERVIEW

- Strategically located at Hwy 46 and FM 3009, with a paved, landscaped entrance on FM 3009
- A responsive plan to support the growing Comal County and greater San Antonio market
- 1,500 acre total property
- Mined over 80+ years to support local demand
- 600+ acres of buffer, setbacks & non-mining areas
- Committed to being a responsible neighbor

OPERATIONS

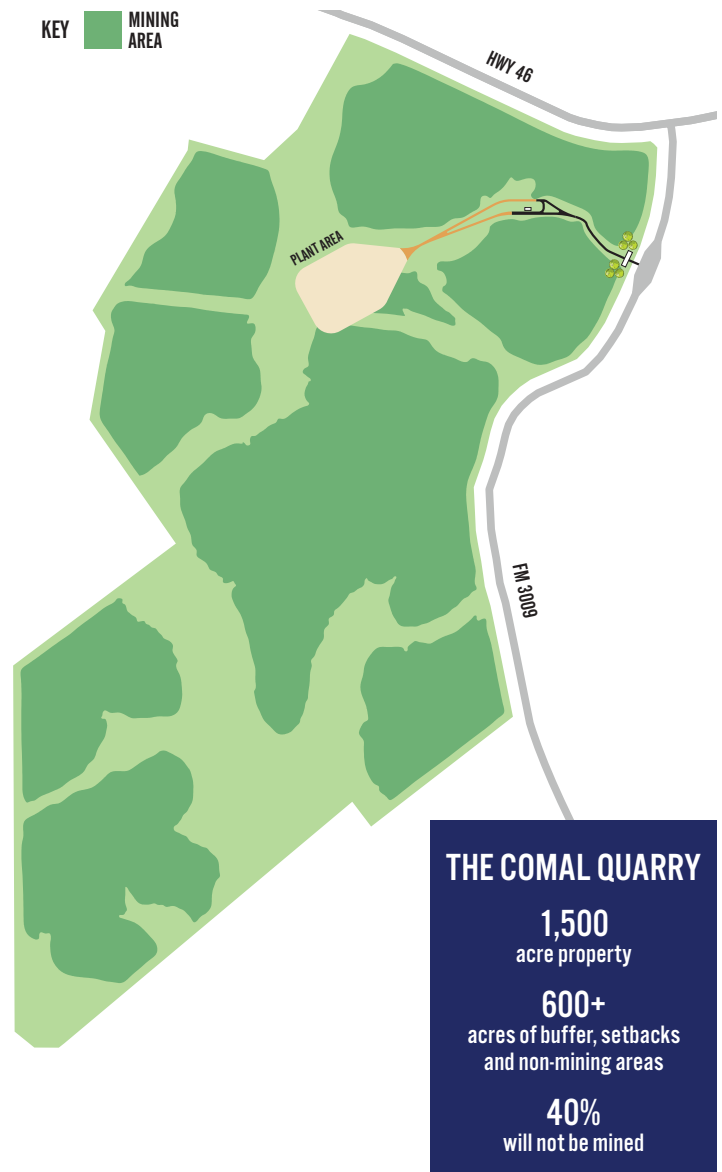
- Up to 10 years to mine 50 acres
- Typical operation 6 a.m. – 6 p.m. Mon. – Sat.
- Blasting on average 1-2 times per month in Year One; 1-2 times per week in Years 5-10
- Typical blast lasts less than 1 second
- Nationally recognized procedures to suppress noise, control dust and manage water resources
- Industry leader in employee safety, industrial health and environmental management systems

DESIGN

- Large property with buffers a minimum of 100-200 feet from the property line
- Gated, paved and landscaped entrance
- 40% of the property will not be mined
- Berms, buffers and natural vegetation to screen operations

BENEFITS

- Supporting local growing infrastructure needs to improve safety and quality of life
- Providing low-cost construction materials for area customers, including residents, employers and local and state governments
- Generating new tax revenues for local government services, including road construction and maintenance, schools and public safety
- Creating 15-20 direct full-time jobs at full production



A paved, landscaped, decorative entrance off of FM 3009 draws from area architecture and surroundings.

SERVING THE ENVIRONMENT RESPONSIBLY

Vulcan will meet or exceed regulations and guidelines established by local, state and federal laws and regulatory agencies to be protective of the environment, public health and safety.

- Establish 600+ acres of buffer, setbacks, non-mining areas and natural landscape, accounting for more than 40 percent of the property
- Meet or exceed regulations and guidelines established by local, state and federal laws and regulatory agencies
- Protect air quality by following requirements to ensure emissions meet best available control technologies and are protective of public health
- Preserve and protect local water resources, aquifers and wells, recycle water, manage stormwater and utilize effective dust-control measures
- Maintain landscaped and vegetated buffers and paved entrance



The Comal Quarry will recycle nearly all of its water, which is mostly stormwater captured on site and essential for the facility's dust control plan.

DEDICATED TO SAFETY



A Human Resources Supervisor meets with staff at Vulcan's 1604 Quarry. At Vulcan, the health and safety of people and the environment guides us in everything we do.

Protecting the safety and health of our employees and the surrounding community is Vulcan's highest priority.

- Recognized as an industry leader for providing employees with a safe and healthy work environment
- Conduct frequent and regular reviews of safety practices to ensure compliance with applicable laws and regulations
- Manage operations safely and address concerns in partnership with our neighbors and the communities we serve
- Work with TxDOT to implement FM 3009 road improvements near the entrance to better ensure safety and traffic flow
- Vulcan will manage blasting at levels that have been proven to protect the health and safety of its employees and neighbors and the integrity of surrounding structures

STRENGTHENING OUR COMMUNITY

A PROVEN TRACK RECORD

- We're no stranger to Texas or Comal County. We currently operate 15 quarries and several other facilities in Texas, and we've been operating facilities in the San Antonio area since the 1970s.
- Through the years, Vulcan has supplied product to nearly 200 customers based in Comal County.
- Vulcan purchased more than \$1.73 million in goods and services from Comal County-based businesses in 2016. We also contract with nearly 20 local vendors, supporting jobs and adding to household income.
- We have many current and former employees living in Comal County and look forward to investing in the area.
- The Annual Vulcan Fun Shoot has raised nearly \$2.3 million to benefit the Cancer Therapy & Research at UT Health San Antonio.

COMMITTED FOR THE LONG TERM

- At Vulcan, we're proud to contribute to the communities in which we live and work in ways big and small. It's more than just financial support.
- Our people volunteer their time, their talents and their hearts. We care about our communities and work hard to make a positive difference with local schools and charities.
- We build meaningful and lasting relationships within the community through involvement in schools and a variety of charitable, civic and business organization
- We locally hosted a Quarry Crusher Run to raise money for active duty military and veterans through Soldiers' Angels.
- We will continue to work closely and cooperatively with our neighbors and the communities we serve.

PARTNERING WITH COMAL COUNTY

- Maintain a 24/7 community line to respond to questions or concerns.
- Participate in community events and support local organizations, including community and civic groups.
- Develop education partnerships to support student learning.
- Partner with local contractors, establish vendor relationships and provide economic opportunities.



Frank Madla Elementary School hosted a Career on Wheels Day for kids to learn about a number of professions. A ready mix driver brought his truck along to teach kids all about concrete.



About Vulcan Materials Company

Vulcan Materials Company is the nation's largest producer of construction aggregates and a major producer of aggregates-based construction materials. An industry leader in safety, health, and environmental stewardship, Vulcan's coast-to-coast footprint aligns with and serves the nation's growth centers. Through the company's extensive logistics network, Vulcan provides materials to build and repair valuable infrastructure such as roads, bridges, residential and commercial buildings, schools, hospitals and places of worship. Learn more at www.csr.vulcanmaterials.com.